

Infrared Receiver



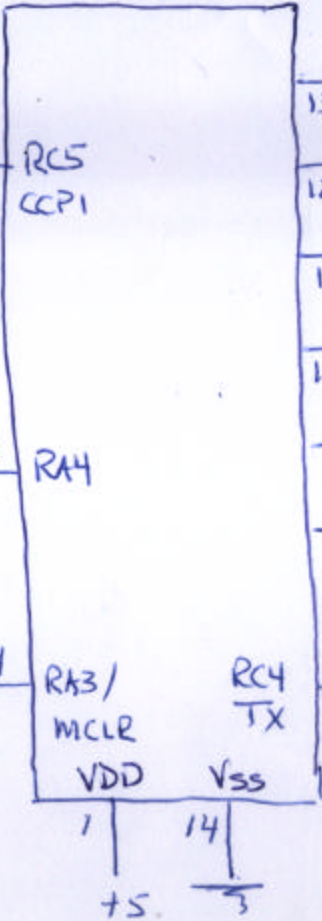
SEE NOTE 1



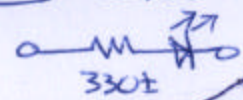
Momentarily to Reset



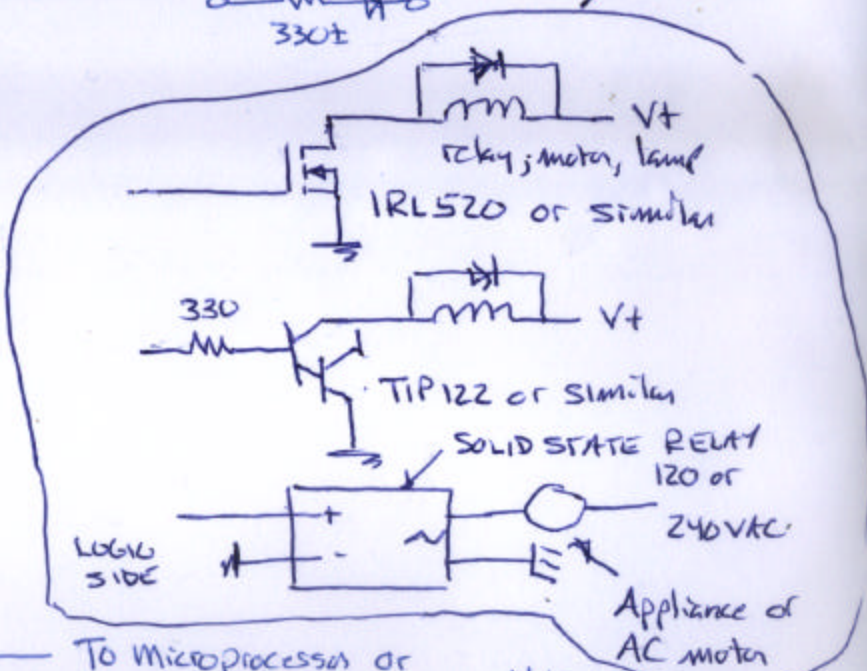
PIC16F1823 or similar



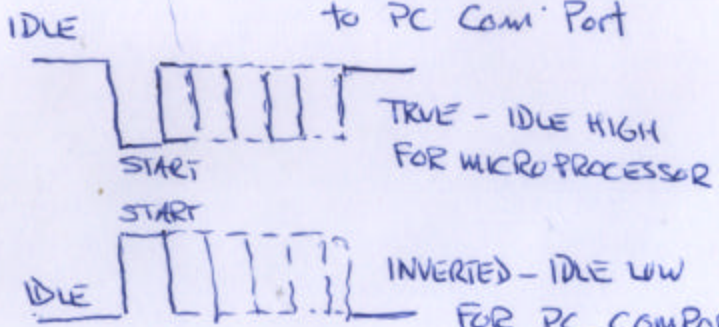
The red LEDs that are provided have an internal series limiting resistor



Various drivers



To microprocessor or to PC Com Port



Note 1. When RA4 input at ground serial data on TX is inverted.

When input is open Tx is true.

IR Remote Control Decoder